

**OMMO**

Professional Plug-And-Play Solar Energy  
Solution Provider

# Flexible solar panel



**SMALL SPACE, BIG POWER**

**20.9%**

Module efficiency

**3year**

Quality/Performance Warranty

# 100W Flexible Solar Panel

## MWT Mono PERC Flexible Module



### Features



#### Light, Thin design

3.4kg weight, match various requirements for low-load projects



#### Convenient Installation

Easy installation and convenient transportation with lower cost



#### Lead-free

Eco-friendly PV design achieves lead-free MWT module without soldering materials



#### High Efficiency And Reliability

Busbar-free design increases cell conversion efficiency, more power output can be achieved at low irradiance conditions



#### Ultra Flexible

Ultra-thin silicon wafers with advanced organic polymer encapsulation materials, minimum bending radius reach 0.30m, fit all kinds of curved surface perfectly



#### Full Black

All black design for more elegant applications

### STC(Electrical Characteristics at Standard Test Conditions)

Spec/Model	SPP100QH365
Max-Power(Pm)	100W
Power Tolerance	0~+5W
Max-PowerVoltage(Vm)	20.4V
Max-Power Current(Im)	4.91A
Open-Circuit Voltage(Voc)	24.6V
Short-Circuit Current(Isc)	5.22A
Effective Module Efficiency(ηm)	17.50%
STC:AM=1.5,Irradiation 1000W/m <sup>2</sup> ,Module Temperature 25°C	

### NMOT(Electrical Characteristics at Nominal Module Operating Temperature)

Spec/Model	SPP100QH365
Max-Power(Pm)	72W
Max-Power Voltage(Vm)	18.5V
Max-Power Current(Im)	3.89A
Open-Circuit Voltage(Voc)	22.5V
Short-Circuit Current(Isc)	4.21A
NMOT:Irradiation 800W/m <sup>2</sup> , Ambient temperature 20°C,Wind Speed 1m/s	

### Temperature Coefficient

Nominal Module Operating Temperature	43±2°C
Temperature coefficient of Pmax	-0.36%/°C
Temperature coefficient of Voc	-0.28%/°C
Temperature coefficient of Isc	0.06%/°C

### Technical Characteristics

Installation Module Dimension (LxWxH)	1075mmX535mmX1.7mm
Weight	1.4 kg
Back material	Back Sheet(black)
Cell(quantity/ material/type/dimensions)	36(3x12)/Mono/166*83mm/5223mm
Frame	None
Junction box(protection degree)	Customizable/4mm <sup>2</sup>
Cable (length/cross-section area)	IP68
Connector	MC4 Compatible

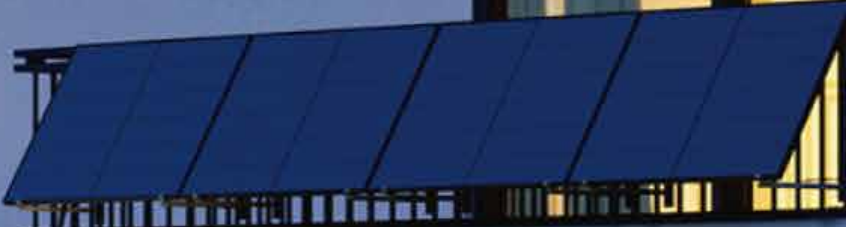


★ ISO 9001: 2015 Quality Management System



★ ISO 45001: 2018 Occupation Health Safety Management System

★ ISO 14001: 2015 Environment Management System





**20.9%**

Module efficiency

**3year**

Quality/Performance Warranty

## 200 Flexible Solar Panel

### MWT Mono PERC Flexible Module



#### Features



##### Light, Thin design

3.4kg weight, match various requirements for low-load projects



##### Convenient Installation

Easy installation and convenient transportation with lower cost



##### Lead-free

Eco-friendly PV design achieves lead-free MWT module without soldering materials



##### High Efficiency And Reliability

Busbar-free design increases cell conversion efficiency, more power output can be achieved at low irradiance conditions



##### Ultra Flexible

Ultra-thin silicon wafers with advanced organic polymer encapsulation materials, minimum bending radius reach 0.30m, fit all kinds of curved surface perfectly



##### Full Black

All black design for more elegant applications

#### STC(Electrical Characteristics at Standard Test Conditions)

Spec/Model	SPP200QH70S
Max-Power(Pm)	200W
Power Tolerance	0~+5W
Max-Power Voltage(Vm)	19.8V
Max-Power Current(Im)	10.11A
Open-Circuit Voltage(Voc)	23.9V
Short-Circuit Current(Isc)	10.65A
Effective Module Efficiency(ηm)	20.40%
STC:AM=1.5,Irradiation 1000W/m <sup>2</sup> , Module Temperature 25°C	

#### NMOT(Electrical Characteristics at Nominal Module Operating Temperature)

Spec/Model	SPP200QH70S
Max-Power(Pm)	145W
Max-Power Voltage(Vm)	18.3V
Max-Power Current(Im)	7.93A
Open-Circuit Voltage(Voc)	22.0V
Short-Circuit Current(Isc)	8.58A
NMOT:Irradiation 800W/m <sup>2</sup> , Ambient temperature 20°C, Wind Speed 1m/s	

#### Temperature Coefficient

Nominal Module Operating Temperature	43±2°C
Temperature coefficient of Pmax	-0.36%/°C
Temperature coefficient of Voc	-0.28%/°C
Temperature coefficient of Isc	0.06%/°C

#### Technical Characteristics

Installation Module Dimension (LxWxH)	1270mm×900mm×2.5mm
Weight	3.4kg
Back material	Back Sheet(black)
Cell (quantity/ material/type/dimensions)	70(5×14)/Mono/166*83mm/p223mm
Frame	None
Junction box(protection degree)	IP68
Cable (length/cross-section area)	Customizable/ 4mm <sup>2</sup>
Connector	MC4 Compatible

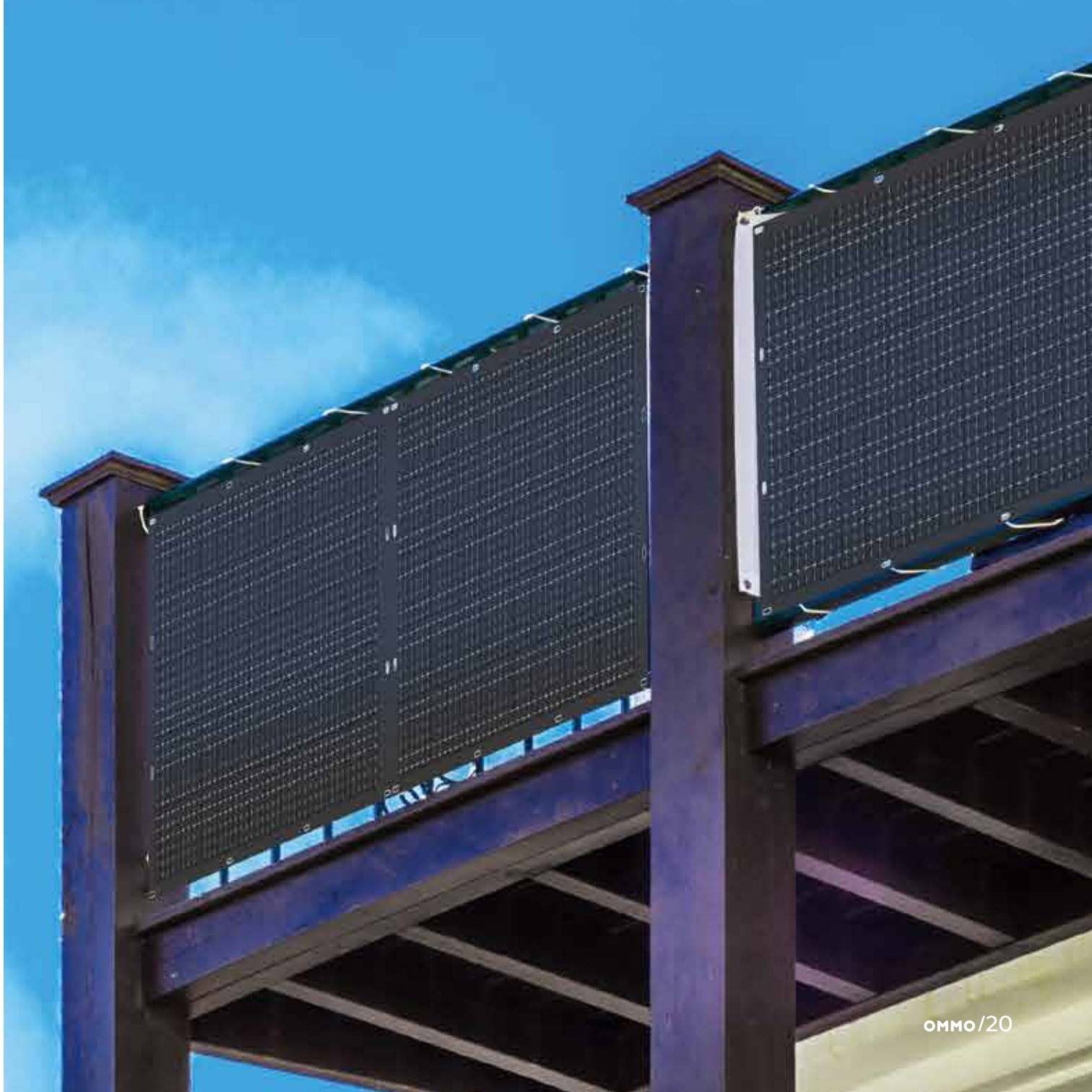


★ ISO 9001: 2015 Quality Management System



★ ISO 45001: 2018 Occupation Health Safety Management System

★ ISO 14001: 2015 Environment Management System



**21.8%**

Module efficiency up to 21.8%

## 380W Flexible Solar Panel

### MWT Mono PERC Flexible Module



#### STC(Electrical Characteristics at Standard Test Conditions)

Spec/Model	SPP380QHES
Max-Power(Pm)	380W
Power Tolerance	0~+5W
Max-Power Voltage(Vm)	35.5V
Max-Power Current(I <sub>m</sub> )	10.70A
Open-Circuit Voltage(Voc)	43.0V
Short-Circuit Current(I <sub>sc</sub> )	11.30A
Effective Module Efficiency(η <sub>m</sub> )	21.50%
STC:AM=1.5,Irradiation 1000W/m <sup>2</sup> , Module Temperature 25°C Power Tolerance±3%	

#### NMOT(Electrical Characteristics at Nominal Module Operating Temperature)

Spec/Model	SPP380QHES
Max-Power(Pm)	286W
Max-Power Voltage(Vm)	33.4V
Max-Power Current(I <sub>m</sub> )	8.56A
Open-Circuit Voltage(Voc)	40.5V
Short-Circuit Current(I <sub>sc</sub> )	9.12A
NMOT:Irradiation 800W/m <sup>2</sup> ,Ambient temperature 20°C,Wind Speed 1m/s	

#### Package

Transportation	Container
Container Size	40'HQ
Quantity(pc/s)	1104
Quantity(per pallet)	46

#### Temperature Coefficient

Nominal Module Operating Temperature	43±2°C
Temperature coefficient of P <sub>max</sub>	-0.36%/C
Temperature coefficient of Voc	-0.28%/C
Temperature coefficient of I <sub>sc</sub>	0.06%/°C
Max. system voltage	DC1500V(IEC)
Max. series fuse rating	18A
Operating temperature range	-40C~+85°C

#### Technical Characteristics

Installation Module Dimension (LxWxH)	1850mmx1070mmx2.5mm
Weight	5.7kg
Back material	Back Sheet(white)
Cell (quantity/ material/type/dimensions)	126(21x6)/Mono/Half-cell
Encapsulant	POE
Frame	None
Junction box(protection degree)	IP68
Cable (length/cross-section area)	Customizable/4mm <sup>2</sup>
Connector	MC4 Compatible
Bendingradius	0.3m



★ ISO 9001: 2015 Quality Management System



★ ISO 45001: 2018 Occupation Health Safety Management System

★ ISO 14001: 2015 Environment Management System



## Features



### Light, Thin design

5.7kg weight, 2.5mm thickness, match various requirements for low-load projects



### Lead-free

Eco-friendly PV design achieves lead-free MWT module without soldering materials



### Customizable

Customized design for different scenarios



### Ultra Flexible

Ultra-thin silicon wafers with advanced organic polymer encapsulation materials, minimum bending radius reach 0.30m, fit all kinds of curved surface perfectly



### High Efficiency And Reliability

Busbar-free design increases cell conversion efficiency, more power output can be achieved at low irradiance conditions



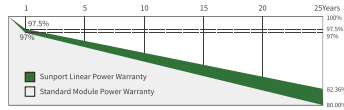
### Convenient Installation

Easy installation and convenient transportation with lower cost

## Lifespan for 25 years, Warranty for 10 years

**12 year**  
Quality Warranty

**25 year**  
Performance Warranty



Insured by LLOYD'S  
**LLOYD'S**

\*1st year degradation less than 2.5%, 25 years power output 82.36% guaranteed.

## Comprehensive Qualifications & Certifications

- ★ ISO 9001:2015 Quality Management System
- ★ ISO 14001:2015 Environment Management System
- ★ ISO 45001:2018 Occupation Health Safety Management System

