

OMMO

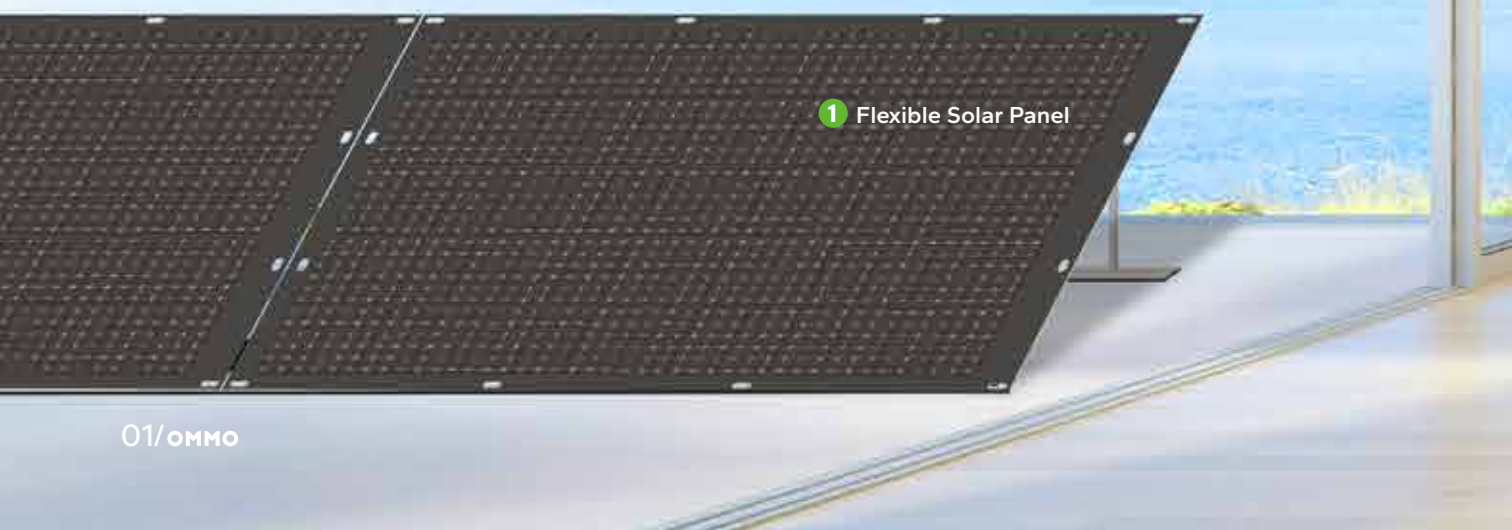
Professional Plug-And-Play Solar Energy
Solution Provider



SMALL SPACE, BIG POWER

EASY PLUG-AND-PLAY SOLAR SYSTEM

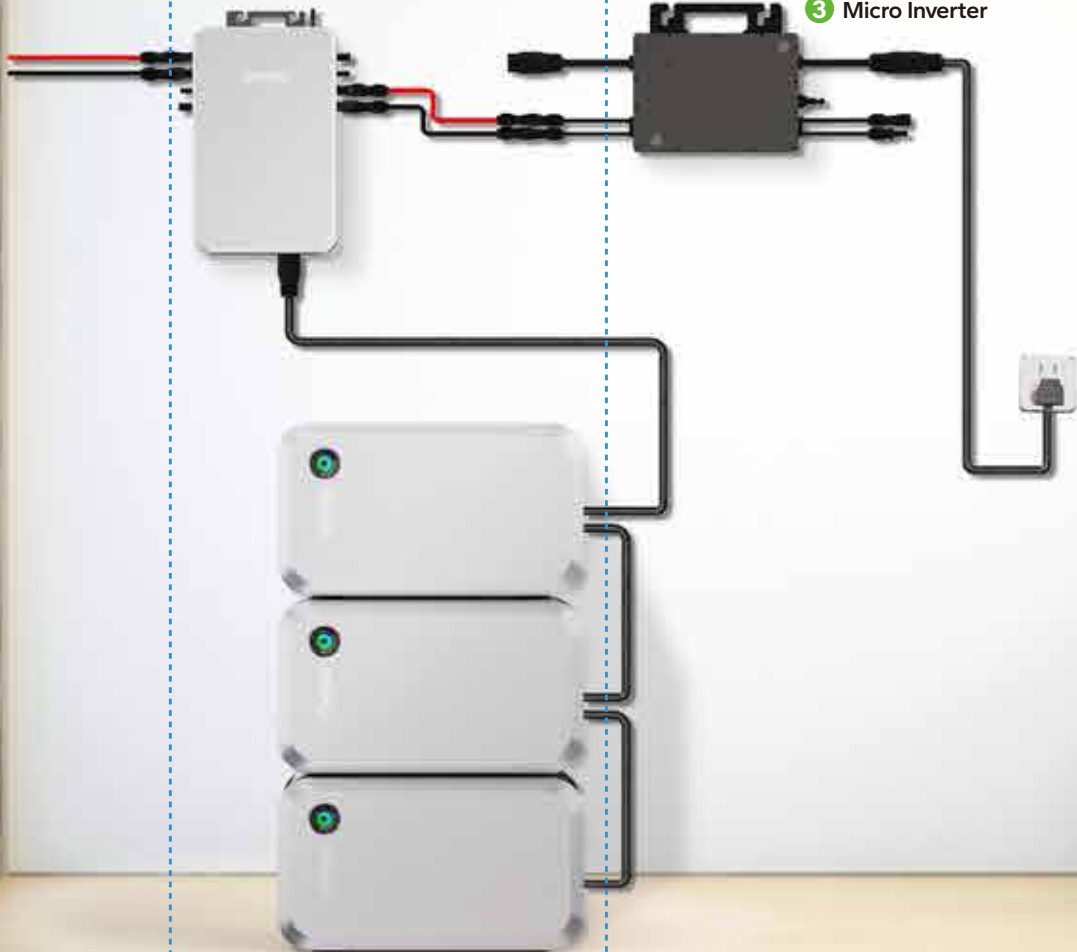
MAKE YOUR ECO FRIENDLY POWER KEEP GOING!!



1 Flexible Solar Panel

2 Storage Battery Set

3 Micro Inverter





Specification

NO 1. Battery pack+PV-HUB

ON SALE

2kWh Battery pack

Product basic parameter

Cell model	EVE-C40
Watt hour	2048Wh
Colour	Silver
Net weight	20.85kg
Gross weight	22.88kg
Dimension L*W*H	458*256*265mm
Cell type	LiFePO4
Series and parallel mode	16S2P
Rated capacity	40Ah
Minimum capacity	≥39Ah
Rated voltage	51.2V
Battery internal resistance	IR≤30mΩ
Charging voltage	58.4V
Charging cut-off current	0.8A
Standard charging	20A(0.5C)
Standard discharging	20A(0.5C)
Maximum continuous discharge current	≤55A
Battery operating voltage	40V-58V



PV-HUB

Product basic parameter

Cell model	OM-1600-PV-HUB
Colour	Silver
Dimension	375×220×60mm
Net weight	≈3.2kg
PV input voltage range	12V-60V
Battery charging power	1600W Max
PV input power	800W×2 Max
Output voltage range	18V-55V
Output Power	800W×2 Max
Battery voltage range	40V-58.4V
EMC Grade	CLASS-B
Peak efficiency	98%
MPPT tracking efficiency	99%
Battery short circuit protection current	66A
Working temperature	0°C-40°C
RS485、CAN communication	support
WiFi communication	support





Hot Selling Plug-And-Play Solar **Set A**
SUPPLYING 4.8 kWh - 6.4 kWh PER DAY

Specification

NO 2.800W Plug-And-Play Solar Kit

ON SALE

200W Fliexble Solar Panels

Electrical Characteristics at Standard Test Conditions(STC)

Spec/Model	SPP200QH705
Max-Power(Pm)	200W
Power Tolerance	0~+5W
Max-Power Voltage(Vm)	19.8V
Max-Power Current(I _m)	10.11A
Open-Circuit Voltage(Voc)	23.9V
Short-Circuit Current(Isc)	10.65A
Effective Module Efficiency(η _m)	20.40%

STC: AM=1.5, Irradiation 1000W/m², Module Temperature 25°C

Temperature Coefficient

Max-Power(P _m)	145W
Max-Power Voltage(V _m)	18.3V
Max-Power Current(I _m)	7.93A
Open-Circuit Voltage(Voc)	22V
Short-Circuit Current(Isc)	8.58A
Nominal Module Operating Temperature	43±2°C
Temperature coefficient of P _{max}	-0.36%/°C
Temperature coefficient of Voc	-0.28%/°C
Temperature coefficient of I _{sc}	0.06%/°C

Mechanical Characteristics

Installation Module Dimension (L×W×H)	1270mm×900mm×2.5mm
Weight	3.4 kg
Back material	Back Sheet(black)
Cell (quantity / material / type / dimensions)	70(5×14)/Mono /166*83mm /φ223mm
Frame	
Junction box(protection degree)	IP68
Cable (length/cross-section area)	Customizable/ 4mm ²
Connector	MC4 Compatible



800W Micro Inverter

DC Input

Model	TM-L800M
Recommended PV Module Power	280W-550W
Start-up Voltage	20V
MPPT Voltage Range	25-55V
Max. Input Voltage	60V
Max. Input Current	13.5A*2
Max. DC Short Circuit Current	16.5A*2
Number of MPPTs	2

AC Output

Rated Output power	800W
Nominal Output Voltage	230V
Extended Output Voltage Range	184V-253V
Max. Output Current	4A
Nominal Output Current	3.47A
Nominal Frequency/Range	50Hz/45 - 55
Power Factor	>0.99 default
Total Harmonic Distortion (THD)	<3%
Max. Units Per Branch	5

Technical Data

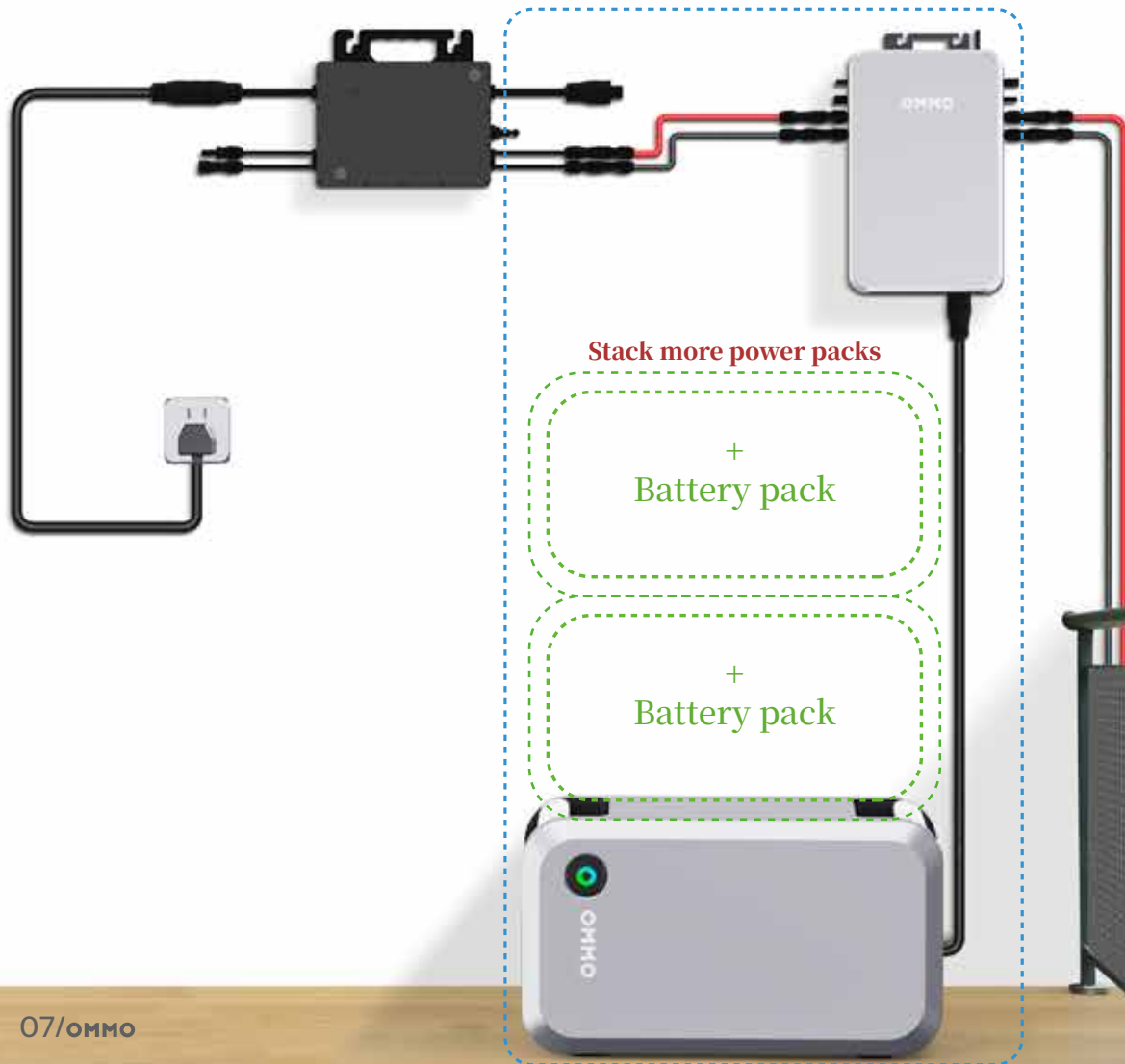
Ambient Temperature Range	-40°C ~ +65°C
Dimensions(W×H×D)	260mm*225mm*32mm
Weight	2.9kg
Enclosure Rating	IP 67
Cooling	Natural Convection - No Fans
Type of Isolation	High Frequency Transformers
Communication	WiFi
Energy Management	Solarman Online Platform



Hot Selling Plug-And-Play Solar Set B

SOLAR POWER FLOW IN OUR CONTROL!!

SAVE IT, AND RELEASE IT!!



Specification

NO 3. 800W Plug-And-Play Solar Kit With 2 Kwh Storage Battery Set

ON SALE

200W Fliexible Solar Panels

STC

Spec/Model	SPP200QH70S
Max-Power(Pm)	200W
Power Tolerance	0~+5W
Max-Power Voltage(Vm)	19.8V
Max-Power Current(I _m)	10.11A
Open-Circuit Voltage(Voc)	23.9V
Short-Circuit Current(Isc)	10.65A
Effective Module Efficiency(η _m)	20.40%
STC: AM=1.5, Irradiation 1000W/m ² , Module Temperature 25°C	

Mechanical Characteristics

Installation Module Dimension (LxWxH)	1270mmx900mmx2.5mm
Weight	3.4 kg
Back material	Back Sheet(black)
Cell	70(5x14)/Mono /166*83mm /φ223mm
Frame	
Junction box(protection degree)	IP68
Cable (length/cross-section area)	Customizable/ 4mm2
Connector	MC4 Compatible



Storage Battery Set

PV HUB

Cell model	OM-1600-PV-HUB	Output Power	800Wx2 Max
Colour	Silver	Battery voltage range	40V-58.4V
Dimension	375x220x60mm	EMC Grade	CLASS-B
Net weight	≈3.2kg	Peak efficiency	98%
PV input voltage range	12V-60V	MPPT tracking efficiency	99%
Battery charging power	1600W Max	Battery short circuit protection current	66A
PV input power	800Wx2 Max	Working temperature	0°C-40°C
Output voltage range	18V-55V	RS485、CAN communication support	
		WiFi communication support	



2 kWh Storage Battery



Cell model	EVE-C40	Minimum capacity	≥39Ah
Watt hour	2048Wh	Rated voltage	51.2V
Colour	Silver	Battery internal resistance	IR≤30mΩ
Net weight	20.85kg	Charging voltage	58.4V
Gross weight	22.88kg	Charging cut-off current	0.8A
Dimension L*W*H	450*270*270mm	Standard charging	20A(0.5C)
Cell type	LiFePO4	Standard discharging	20A(0.5C)
Series and parallel mode	16S2P	Maximum continuous discharge current	≤55A
Rated capacity	40Ah	Battery operating voltage	40V-58V

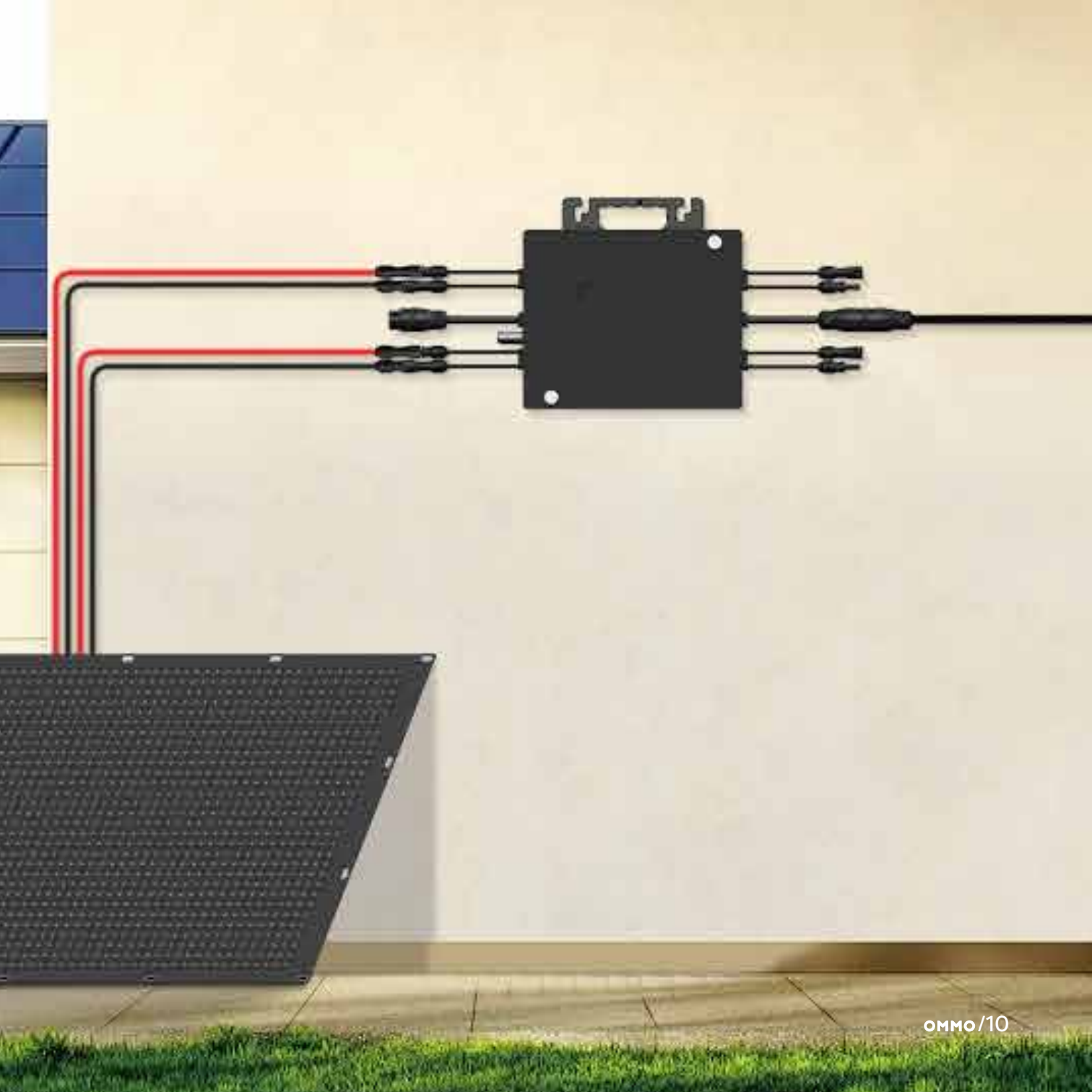
800W Micro Inverter

Model	TM-L800M	Nominal Output Voltage	230V
Recommended PV Module Power	280W-550W	Extended Output Voltage Range	184V-253V
Start-up Voltage	20V	Max. Output Current	3A / 4A
MPPT Voltage Range	25-55V	Nominal Output Current	3.47A
Max. Input Voltage	60V	Nominal Frequency/Range	50Hz/45 - 55
Max. Input Current	13.5A*2	Power Factor	>0.99 default
Max. DC Short Circuit Current	16.5A*2	Total Harmonic Distortion (THD)	<3%
Number of MPPTs	2	Max. Units Per Branch	7 / 5
Rated Output power	800W		



MORE OPTIONS FOR DIY





800W Micro inverter



96% High efficiency up to 96% with 2 individual MPPTS

IP67 IP 67 protection, die cast design

60V High safety with max DC voltage 60V

13.5A Max.DCinput current of 13.5A, adapt to the market mainstream Pv modules

 Integrated smart monitoring & communication system

 Easy installation of plug and play

Input Data (DC)

Model	TM-L800M
Recommended PV Module Power	280W-550W
Start-up Voltage	20V
MPPT Voltage Range	25-55V
Max. Input Voltage	60V
Max. Input Current	13.5A*2
Max. DC Short Circuit Current	16.5A*2
Number of MPPTS	2

Output Data (AC)

Rated Output power	800W
Nominal Output Voltage	230V
Extended Output Voltage Range	184V-253V
Max. Output Current	4A
Nominal Output Current	3.47A
Nominal Frequency/Range	50Hz/45 - 55
Power Factor	>0.99 default
Total Harmonic Distortion (THD)	<3%
Max. Units Per Branch	5

Mechanical Data

Peak Efficiency	96.00%
CEC Efficiency	95.50%
Static MPPT Efficiency	99.50%
Night Time Power Consumption	<50mW
Ambient Temperature Range	-40°C ~ +65°C
Dimensions(WxHxD)	260mm*225mm*32mm
Weight	2.9kg
Enclosure Rating	IP 67
Cooling	Natural Convection - No Fans
Type of Isolation	High Frequency Transformers
Communication	WiFi
Energy Management	Solarman Online Platform
Certifications	IEC62109-1 ;IEC62109-2;IEC61000-6;VDE4105; VRF2019;NEN-EN50549-1:2019;PN-EN50549-1:2019
Warranty	5 Years Standard



1600W/1800W Micro inverter



96% High efficiency up to 96% with 2 individual MPPTS

IP67 IP 67 protection, die cast design

60V High safety with max DC voltage 60V

14.5A Max.DCinput current of 14.5A, adapt to the market mainstream Py modules

 Integrated smart monitoring & communication system

 Easy installation of plug and play

Input Data (DC)

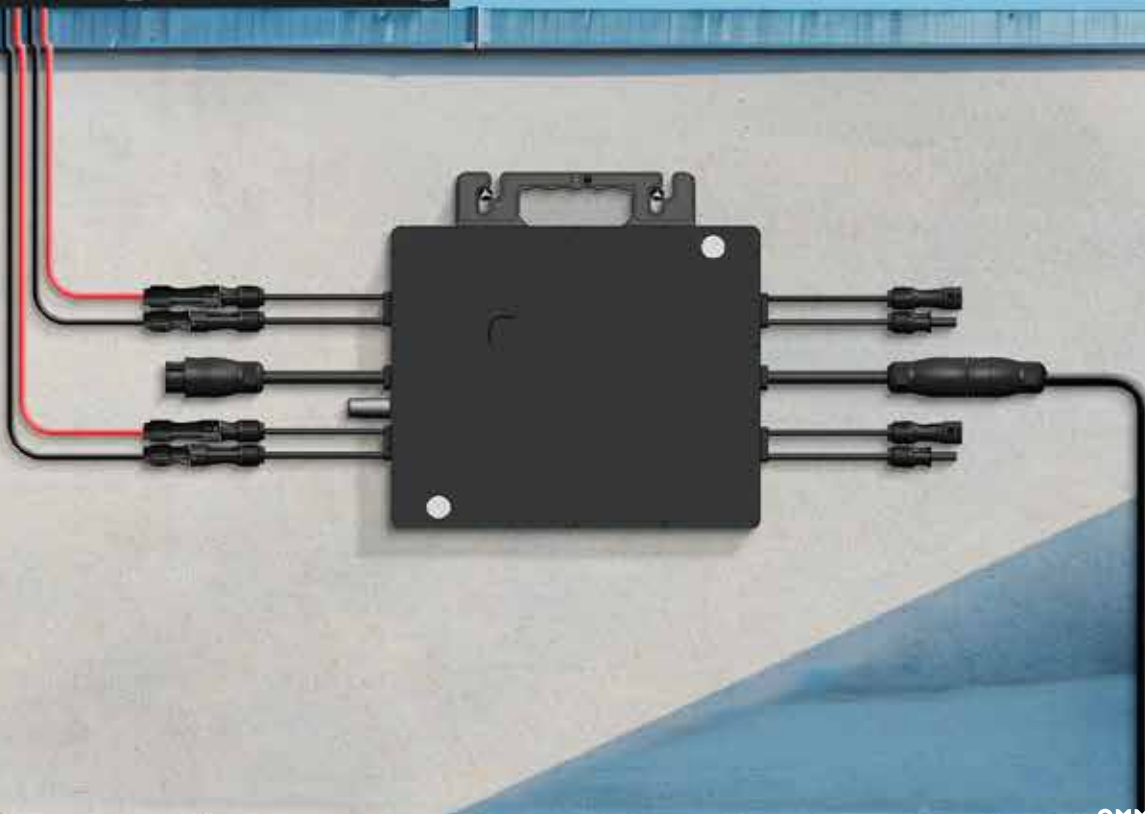
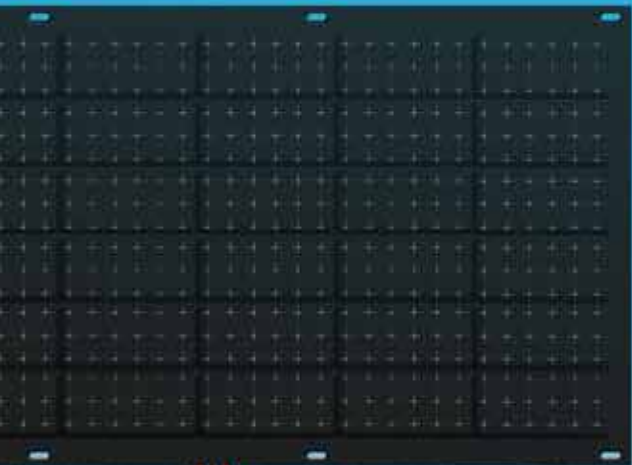
Model	TM-L1600M / TM-L1800M
Recommended PV Module Power	280W-550W / 280W-600W
Start-up Voltage	28V
MPPT Voltage Range	28-55V
Full load voltage range	36-55V / 40-55V
Max. Input Voltage	60V
Max. Input Current	13A*4 / 14.5A*4
Max. DC Short Circuit Current	19A*4
Number of MPPTs	4

Output Data (AC)

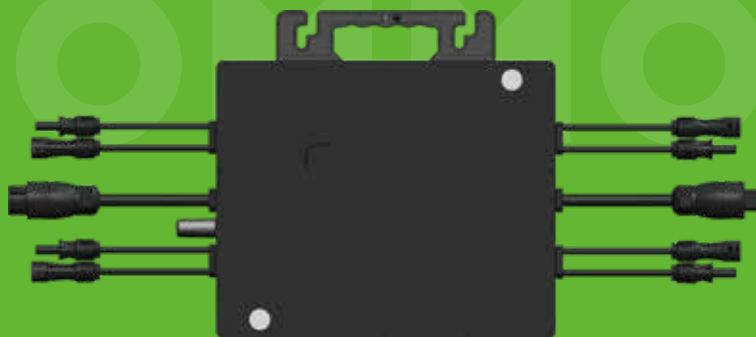
Rated output power	1600W / 1800W
Apparent power	1600VA / 2000VA
Maximum output power	1600W / 2000W
Nominal Output Voltage	~L,N,PE,230V / ~L,N,PE,220V
Extended Output Voltage Range	184V-253V / 176V-242V
Nominal Output Current	7.0A / 12A
Maximum Current	7.7A / 8.18A
Nominal Frequency/Range	50Hz,45 - 55 / 60Hz,55 - 65
Power Factor	>0.99 (Default)
Total Harmonic Distortion (THD)	<3%
Max. Units Per Branch	3

Mechanical Data

Peak Efficiency	96%
CEC Efficiency	95.50%
Static MPPT Efficiency	99.50%
Night Time Power Consumption	<50mW
Ambient Temperature Range	-40°C to +65°C
Dimensions(WxHxD)	312*301*43mm
Weight	7kg
Enclosure Rating	IP 67
Cooling	Natural Convection - No Fans
Type of Isolation	High Frequency Transformers
Communication	WiFi
Energy Management	Solarman Online Platform
Overvoltage category	II(PV), III(Mains)
Inverter topology	Isolated
1600W Certifications	VIEC62109-1;IEC62109-2;IEC61000-6;VDE4105; RF2019;NEN-EN 50549-1:2019;PN-EN 50549-1:2019;
1800W Certifications	IEC/EN 62109-1;IOErCd/iEnNance21N0o9.-124; 0 IEC/EN 61000-6;
Warranty	5 Years Standard



2000W Micro inverter




96% High efficiency up to 96% with 2 individual MPPTS

IP67 IP 67 protection, die cast design

60V High safety with max DC voltage 60V

14.5A Max.DCinput current of 14.5A, adapt to the market mainstream Pv modules

 Integrated smart monitoring & communication system

 Easy installation of plug and play

Input Data (DC)

Model	TM-L2000M
Recommended PV Module Power	280W-650W
Start-up Voltage	28V
MPPT Voltage Range	28-55V
Full load voltage range	40-55V
Max. Input Voltage	60V
Max. Input Current	14.5A*4
Max. DC Short Circuit Current	19A*4
Number of MPPTS	4

Output Data (AC)

Rated output power	2000W
Apparent power	2000VA
Maximum output power	2000W
Nominal Output Voltage	~L/N/PE,220V
Extended Output Voltage Range	176V-242V
Nominal Output Current	12A
Maximum Current	9.1A
Nominal Frequency/Range	60Hz/55 - 65
Power Factor	>0.99 (Default)
Total Harmonic Distortion (THD)	<3%
Max. Units Per Branch	3

Mechanical Data

Peak Efficiency	96%
CEC Efficiency	95.50%
Static MPPT Efficiency	99.50%
Night Time Power Consumption	<50mW
Ambient Temperature Range	-25°C to +65°C
Dimensions(WxHxD)	312*301*43mm
Weight	7kg
Enclosure Rating	IP 67
Cooling	Natural Convection - No Fans
Type of Isolation	High Frequency Transformers
Communication	WiFi
Energy Management	Solarman Online Platform
Overvoltage category	II(PV), III(Mains)
Inverter topology	Isolated
Certifications	IEC/EN 62109-1;IOErCd/iEnNance21N0o9.-124; 0 IEC/EN 61000-6;
Warranty	5 Years Standard



20.9%

Module efficiency

3year

Quality/Performance Warranty

100W Flexible Solar Panel

MWT Mono PERC Flexible Module



Features



Light, Thin design

3.4kg weight, match various requirements for low-load projects



Convenient Installation

Easy installation and convenient transportation with lower cost



Lead-free

Eco-friendly PV design achieves lead-free MWT module without soldering materials



High Efficiency And Reliability

Busbar-free design increases cell conversion efficiency, more power output can be achieved at low irradiance conditions



Ultra Flexible

Ultra-thin silicon wafers with advanced organic polymer encapsulation materials, minimum bending radius reach 0.30m, fit all kinds of curved surface perfectly



Full Black

All black design for more elegant applications

STC(Electrical Characteristics at Standard Test Conditions)

Spec/Model	SPP100QH365
Max-Power(Pm)	100W
Power Tolerance	0~+5W
Max-PowerVoltage(Vm)	20.4V
Max-Power Current(Im)	4.91A
Open-Circuit Voltage(Voc)	24.6V
Short-Circuit Current(Isc)	5.22A
Effective Module Efficiency(ηm)	17.50%
STC:AM=1.5,Irradiation 1000W/m ² ,Module Temperature 25°C	

NMOT(Electrical Characteristics at Nominal Module Operating Temperature)

Spec/Model	SPP100QH365
Max-Power(Pm)	72W
Max-Power Voltage(Vm)	18.5V
Max-Power Current(Im)	3.89A
Open-Circuit Voltage(Voc)	22.5V
Short-Circuit Current(Isc)	4.21A
NMOT:Irradiation 800W/m ² , Ambient temperature 20°C,Wind Speed 1m/s	

Temperature Coefficient

Nominal Module Operating Temperature	43±2°C
Temperature coefficient of Pmax	-0.36%/°C
Temperature coefficient of Voc	-0.28%/°C
Temperature coefficient of Isc	0.06%/°C

Technical Characteristics

Installation Module Dimension (LxWxH)	1075mmX535mmX1.7mm
Weight	1.4 kg
Back material	Back Sheet(black)
Cell(quantity/ material/type/dimensions)	36(3x12)/Mono/166*83mm/5223mm
Frame	None
Junction box(protection degree)	Customizable/4mm ²
Cable (length/cross-section area)	IP68
Connector	MC4 Compatible

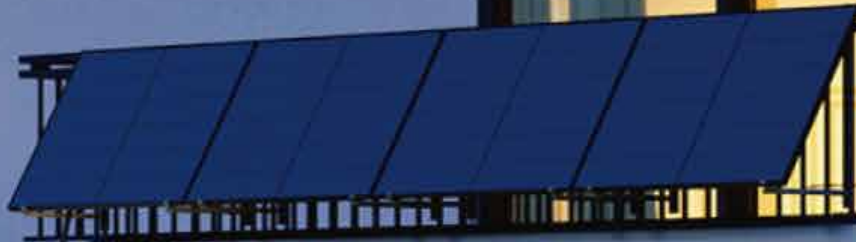


★ ISO 9001: 2015 Quality Management System



★ ISO 45001: 2018 Occupation Health Safety Management System

★ ISO 14001: 2015 Environment Management System



20.9%

Module efficiency

3year

Quality/Performance Warranty

200 Flexible Solar Panel

MWT Mono PERC Flexible Module



Features



Light, Thin design

3.4kg weight, match various requirements for low-load projects



Convenient Installation

Easy installation and convenient transportation with lower cost



Lead-free

Eco-friendly PV design achieves lead-free MWT module without soldering materials



High Efficiency And Reliability

Busbar-free design increases cell conversion efficiency, more power output can be achieved at low irradiance conditions



Ultra Flexible

Ultra-thin silicon wafers with advanced organic polymer encapsulation materials, minimum bending radius reach 0.30m, fit all kinds of curved surface perfectly



Full Black

All black design for more elegant applications

STC(Electrical Characteristics at Standard Test Conditions)

Spec/Model	SPP200QH70S
Max-Power(Pm)	200W
Power Tolerance	0~+5W
Max-Power Voltage(Vm)	19.8V
Max-Power Current(Im)	10.11A
Open-Circuit Voltage(Voc)	23.9V
Short-Circuit Current(Isc)	10.65A
Effective Module Efficiency(nm)	20.40%
STC:AM=1.5,Irradiation 1000W/m ² , Module Temperature 25°C	

NMOT(Electrical Characteristics at Nominal Module Operating Temperature)

Spec/Model	SPP200QH70S
Max-Power(Pm)	145W
Max-Power Voltage(Vm)	18.3V
Max-Power Current(Im)	7.93A
Open-Circuit Voltage(Voc)	22.0V
Short-Circuit Current(Isc)	8.58A
NMOT:Irradiation 800W/m ² ,Ambient temperature 20°C,Wind Speed 1m/s	

Temperature Coefficient

Nominal Module Operating Temperature	43±2°C
Temperature coefficient of Pmax	-0.36%/°C
Temperature coefficient of Voc	-0.28%/°C
Temperature coefficient of Isc	0.06%/°C

Technical Characteristics

Installation Module Dimension (LxWxH)	1270mm×900mm×2.5mm
Weight	3.4kg
Back material	Back Sheet(black)
Cell (quantity/ material/type/dimensions)	70(5×14)/Mono/166*83mm/p223mm
Frame	None
Junction box(protection degree)	IP68
Cable (length/cross-section area)	Customizable/ 4mm ²
Connector	MC4 Compatible

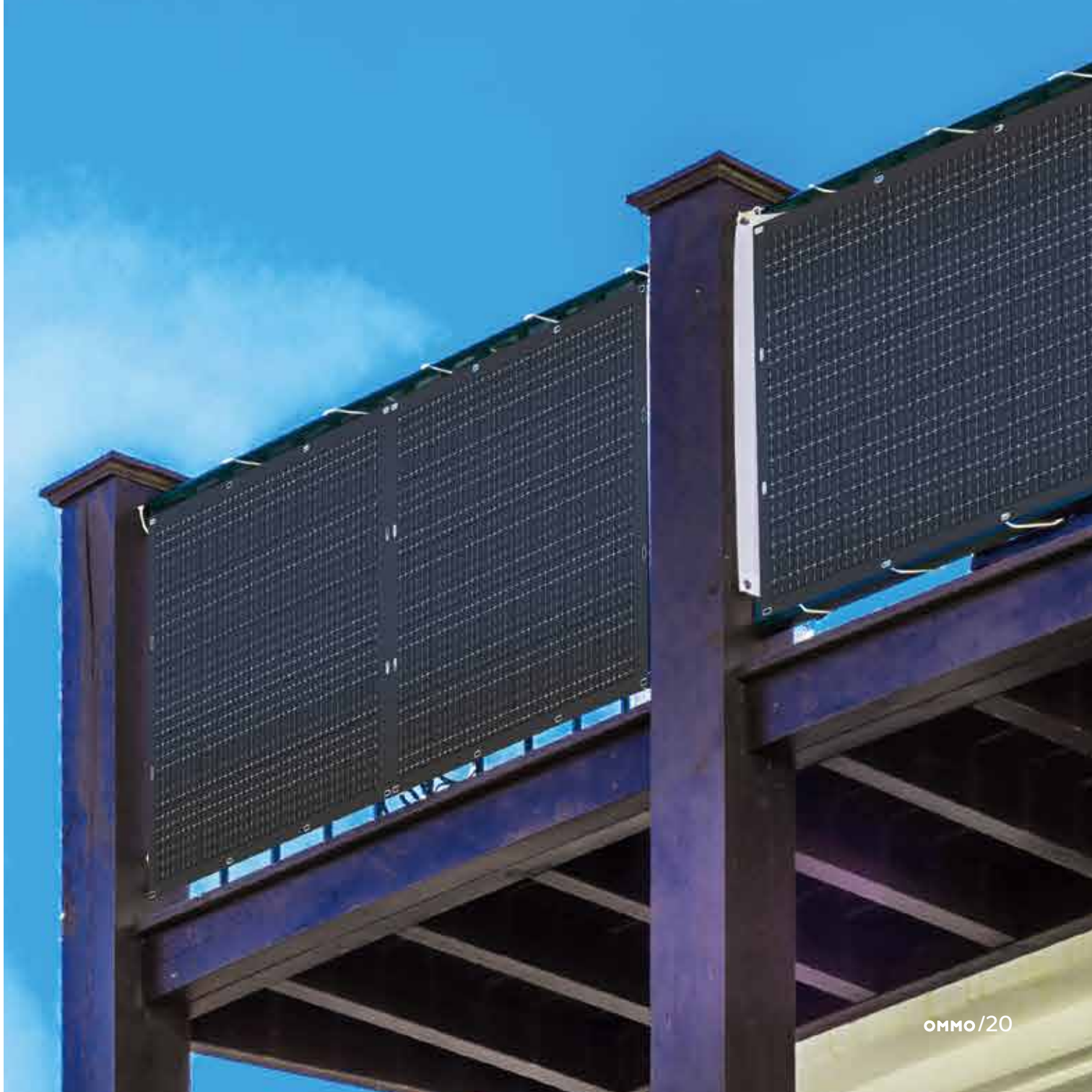


★ ISO 9001: 2015 Quality Management System



★ ISO 45001: 2018 Occupation Health Safety Management System

★ ISO 14001: 2015 Environment Management System



21.8%

Module efficiency up to 21.8%

380W Flexible Solar Panel

MWT Mono PERC Flexible Module



STC(Electrical Characteristics at Standard Test Conditions)

Spec/Model	SPP380QHES
Max-Power(Pm)	380W
Power Tolerance	0~+5W
Max-Power Voltage(Vm)	35.5V
Max-Power Current(I _m)	10.70A
Open-Circuit Voltage(Voc)	43.0V
Short-Circuit Current(I _{sc})	11.30A
Effective Module Efficiency(η _m)	21.50%
STC:AM=1.5,Irradiation 1000W/m ² , Module Temperature 25°C Power Tolerance±3%	

NMOT(Electrical Characteristics at Nominal Module Operating Temperature)

Spec/Model	SPP380QHES
Max-Power(Pm)	286W
Max-Power Voltage(Vm)	33.4V
Max-Power Current(I _m)	8.56A
Open-Circuit Voltage(Voc)	40.5V
Short-Circuit Current(I _{sc})	9.12A
NMOT:Irradiation 800W/m ² ,Ambient temperature 20°C,Wind Speed 1m/s	

Package

Transportation	Container
Container Size	40'HQ
Quantity(pc/s)	1104
Quantity(per pallet)	46

Temperature Coefficient

Nominal Module Operating Temperature	43±2°C
Temperature coefficient of P _{max}	-0.36%/C
Temperature coefficient of Voc	-0.28%/C
Temperature coefficient of I _{sc}	0.06%/°C
Max. system voltage	DC1500V(IEC)
Max. series fuse rating	18A
Operating temperature range	-40C~+85°C

Technical Characteristics

Installation Module Dimension (LxWxH)	1850mmx1070mmx2.5mm
Weight	5.7kg
Back material	Back Sheet(white)
Cell (quantity/ material/type/dimensions)	126(21x6)/Mono/Half-cell
Encapsulant	POE
Frame	None
Junction box(Protection degree)	IP68
Cable (length/cross-section area)	Customizable/4mm ²
Connector	MC4 Compatible
Bendingradius	0.3m



★ ISO 9001: 2015 Quality Management System



★ ISO 45001: 2018 Occupation Health Safety Management System

★ ISO 14001: 2015 Environment Management System

Features



Light, Thin design

5.7kg weight, 2.5mm thickness, match various requirements for low-load projects



Lead-free

Eco-friendly PV design achieves lead-free MWT module without soldering materials



Customizable

Customized design for different scenarios



Ultra Flexible

Ultra-thin silicon wafers with advanced organic polymer encapsulation materials, minimum bending radius reach 0.30m, fit all kinds of curved surface perfectly



High Efficiency And Reliability

Busbar-free design increases cell conversion efficiency, more power output can be achieved at low irradiance conditions



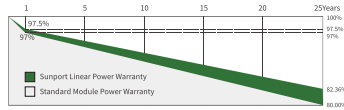
Convenient Installation

Easy installation and convenient transportation with lower cost

Lifespan for 25 years, Warranty for 10 years

12 year
Quality Warranty

25 year
Performance Warranty



Insured by LLOYD'S
LLOYD'S

*1st year degradation less than 2.5%, 25 years power output 82.36% guaranteed.

Comprehensive Qualifications & Certifications

- ★ ISO 9001:2015 Quality Management System
- ★ ISO 14001:2015 Environment Management System
- ★ ISO 45001:2018 Occupation Health Safety Management System



NEW ARRIVING

MultiFunction Power Station Series





New Product **2400W**

Portable power station

Product Specification

Model	OM-2400
Colour	Silver
Net weight	25Kg
Dimension	L512mm*W336mm*H412mm
Charging temperature range	0 ~ 40°C
Discharging temperature range	-10 ~ 40°C
Storage temperature range	0 ~ 40°C
Working humidity range	10 ~ 90%
Transportation certification	UN38.3,MSDS,RoHS
Battery capacity	2048Wh(40Ah)
Battery type	LiFeP04
Cycle life	3000 cycles
Certificate	"For US: UL 9540A, UL 1973, CE-EMC, CB IEC62619 For EU: CB IEC62619, CE-EMC, MSDS, UN38.3"



BMS intelligent battery management



Lithium iron phosphate battery

Product Parameters

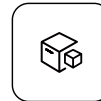
Cigarette Lighter X 1	12VDC/10A
DC5521 X 2	12VDC/10A
USB-A X 2	5V/2.4A,9V/2A,12V/1.5A,MAX18W 36W in total
USB-C(Type-C)x 4	5/9/12/15/20VDC,3A;20VDC,5A MAX100W(Built-in chip)
Wireless charging X 1	7.5W/10W/15W
Rated output power	2400W Total
Rated output voltage	230V
Rated output current	10.5A
Rated output frequency	50Hz
Peak output power	2520W
Port type	Solar power port transfer to XT60 host line
Input power	MAX 1200W/2 hours from 0%-100%/@0 ~ 40°C
Input voltage range	12 ~ 60VDC
Input current	0 ~ 25A



Convenient



Small size



Multifunctional



Energy conservation

Store electricity during the day



Acts as backup power source at night





Small space

The power plant system can be installed in the balcony without occupying other room space, improving space utilization efficiency.



Easy installation

The installation is quite simple and real quick, which will greatly save installation cost and construction time.



High storage efficiency

Solar panels enables to convert sunlight into electricity and store excess electrical energy into batteries, thereby improving the efficiency of electrical energy utilization. At the same time, the energy storage system can also optimize the management of electric energy and improve the overall energy utilization efficiency.



Energy saving

The balcony energy storage system converts solar energy into storage energy, reducing dependence on traditional energy sources, carbon emissions and meeting environmental protection and energy conservation requirements.



1200W

Portable power station

Product Spec

Product Name	1200W power station
Product Code	OMMO-1200
Color	Sliver+Black
Box	1PCS
Packaging	Carton
Shell material	Fireproof PC+ABS,Aluminum Alloy
Product Size	390*260*290mm
LED light	YES
Origin	China
Packing accessories	ACline,Cigarette charge cable,User manual
Detachable power bank	*1
PV IN	XT60*1



Camping out



Outdoor construction



BMS intelligent battery management



Lithium iron phosphate battery

Product Parameters

Capacity	1024Wh
Output Peak power	>1260W (60s Constant power protection)
Battery Type	LiFePO4 20Ah*16pcs (852P)
Input	AC 230V, 3.5A (800W)
AC output	AC 110V/220V 1200W Pure sine wave output*3
USB Output	QC3.0*2(18W) Type-c*2(PD60W)Type-c*2(PD100W)
Charging time	1.3~1.5hours
DC output	12V/10A
Certificate	CE,FCC,ROHS,PSE,MSDS,UN38.3
Warranty period	5 years
Battery brand	EVE
Insurance	YES
External battery interface	2
Recycle times	3000 times





BMS intelligent battery management



Lithium iron phosphate battery

Product Parameters

Cigarette LighterX 1	12VDC/10A
DC5521 X 2	12VDC/10A
USB-A X 2	5V/2.4A,9V/2A,12V/1.5A,MAX18W 36W in total
USB-C(Type-C)x 4	5/9/12/15/20VDC,3A;20VDC,5A MAX100W(Built-in chip)
Wireless charging X 1	7.5W/10W/15W
Rated output power	600W in total
Rated output voltage	220~240Vac
Rated output current	2.6A
Rated output frequency	50Hz
Peak output power	630W
Port type	Solar power port transfer to XT60 host line
Input power	MAX 200W/3 hours from 0%-100%/@0~40°C
Input voltage range	12~60VDC
Input current	0~12A

600W

Portable power station

Product Spec

Model	OM-600
Colour	Silver
Net weight	6.5Kg
Dimension	L345mm*W215mm*H218mm
Charging temperature range	0~40°C
Discharging temperature range	-10~40°C
Storage temperature range	0~40°C
Working humidity range	10~90%
Transportation certification	UN38.3,MSDS,RoHS
Battery capacity	512Wh(20Ah)
Battery type	LiFePO4
Cycle life	3000 cycles
Certificate	"For US: UL 9540A, UL 1973, CE-EMC, CB IEC62619 For EU: CB IEC62619, CE-EMC, MSDS, UN38.3"



Emergency power failure



Car bonding

OMMO CO.,LIMITED

Professional Plug-And-Play Solar Energy Solution Provider

Balcony energy storage systems are suitable for a variety of people and areas, including individual users, high-rise residential developers, commercial users and rural areas. With the improvement of environmental awareness and the promotion of renewable energy, the market potential of balcony energy storage systems is unlimited and is expected to continue to grow and develop in the future.

Dongguan OMMO Technology Co., Ltd. is a manufacturer focusing on the R&D and production of solar energy storage products, with its own brand "OMMO".

Our company is located in Shenzhen, with a reliable factory and a complete industrial supply chain in Dongguan. It has 4 automated production lines, covers an area of more than 40,000 square meters and more than 150 R&D and sales personnel, additionally we have more than 20 patents. It can provide a complete solutions of product development, assembly, quality control and after-sales services for customers around the world.

OMMO main focus on: balcony power generation system, outdoor portable power station, PV HUB, solar micro inverter, solar panel and other energy storage products to achieve a better efficient energy saving solution. Dongguan OMMO attaches great importance to quality control, we have obtained multiple certifications such as CNAS, CE, RoHs, MSDS, IEC, UN38.3, VDE, WEEE, etc.

We provide ODM & OEM services, and have gained the trust and support of global customers from Europe, America, Japan, Southeast Asia, etc. by providing tailor-made ID design, experienced production technology and unique product innovation! With the vision of committing to provide green energy products and solutions, making green energy inexhaustible and allowing everyone to live a care-free life!

Professional Plug-And-Play Solar Energy Solution Provider



The image features a large, bold, black 'OMMO' logo centered in the upper half. The background is a photograph of a rooftop solar panel array with a view of mountains and a sky with light clouds. A small lantern-like structure is visible on the right side of the roof.

OMMO

OMMO TECHNOLOGY CO., LTD

ADD:No. 2606, Jia'anda Building, No. 110, Huafan Road,

Dalang, Longhua District, Shenzhen

Web:www.ommo.com