

# OMMO

Professional Plug-And-Play Solar Energy  
Solution Provider

## Balcony solar power system



# SMALL SPACE, BIG POWER



# Specification

## NO 1. Battery pack+PV-HUB

ON SALE

### 2kWh Battery pack

#### Product basic parameter

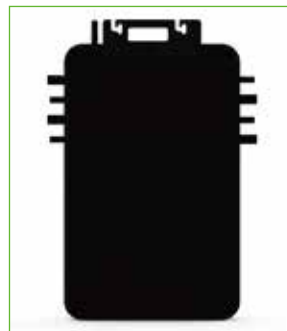
Cell model	EVE-C40
Watt hour	2048Wh
Colour	Silver
Net weight	20.85kg
Gross weight	22.88kg
Dimension L*W*H	458*256*265mm
Cell type	LiFePO4
Series and parallel mode	16S2P
Rated capacity	40Ah
Minimum capacity	≥39Ah
Rated voltage	51.2V
Battery internal resistance	IR≤30mΩ
Charging voltage	58.4V
Charging cut-off current	0.8A
Standard charging	20A(0.5C)
Standard discharging	20A(0.5C)
Maximum continuous discharge current	≤55A
Battery operating voltage	40V-58V



### PV-HUB

#### Product basic parameter

Cell model	OM-1600-PV-HUB
Colour	Silver
Dimension	375×220×60mm
Net weight	≈3.2kg
PV input voltage range	12V-60V
Battery charging power	1600W Max
PV input power	800W×2 Max
Output voltage range	18V-55V
Output Power	800W×2 Max
Battery voltage range	40V-58.4V
EMC Grade	CLASS-B
Peak efficiency	98%
MPPT tracking efficiency	99%
Battery short circuit protection current	66A
Working temperature	0°C-40°C
RS485、CAN communication	support
WiFi communication	support





Hot Selling Plug-And-Play Solar **Set A**  
**SUPPLYING 4.8 kWh - 6.4 kWh PER DAY**

# Specification

## NO 2.800W Plug-And-Play Solar Kit

ON SALE

### 200W Fliexble Solar Panels

#### Electrical Characteristics at Standard Test Conditions(STC)

Spec/Model	SPP200QH705
Max-Power(Pm)	200W
Power Tolerance	0~+5W
Max-Power Voltage(Vm)	19.8V
Max-Power Current(I <sub>m</sub> )	10.11A
Open-Circuit Voltage(Voc)	23.9V
Short-Circuit Current(Isc)	10.65A
Effective Module Efficiency(η <sub>m</sub> )	20.40%

STC: AM=1.5, Irradiation 1000W/m<sup>2</sup>, Module Temperature 25°C

#### Temperature Coefficient

Max-Power(P <sub>m</sub> )	145W
Max-Power Voltage(V <sub>m</sub> )	18.3V
Max-Power Current(I <sub>m</sub> )	7.93A
Open-Circuit Voltage(Voc)	22V
Short-Circuit Current(Isc)	8.58A
Nominal Module Operating Temperature	43±2°C
Temperature coefficient of P <sub>max</sub>	-0.36%/°C
Temperature coefficient of Voc	-0.28%/°C
Temperature coefficient of I <sub>sc</sub>	0.06%/°C

#### Mechanical Characteristics

Installation Module Dimension (LxWxH)	1270mm×900mm×2.5mm
Weight	3.4 kg
Back material	Back Sheet(black)
Cell (quantity / material / type / dimensions)	70(5×14)/Mono /166*83mm /φ223mm
Frame	
Junction box(Protection degree)	IP68
Cable (length/cross-section area)	Customizable/ 4mm <sup>2</sup>
Connector	MC4 Compatible



### 800W Micro Inverter

#### DC Input

Model	TM-L800M
Recommended PV Module Power	280W-550W
Start-up Voltage	20V
MPPT Voltage Range	25-55V
Max. Input Voltage	60V
Max. Input Current	13.5A*2
Max. DC Short Circuit Current	16.5A*2
Number of MPPTs	2

#### AC Output

Rated Output power	800W
Nominal Output Voltage	230V
Extended Output Voltage Range	184V-253V
Max. Output Current	4A
Nominal Output Current	3.47A
Nominal Frequency/Range	50Hz/45 - 55
Power Factor	>0.99 default
Total Harmonic Distortion (THD)	<3%
Max. Units Per Branch	5

#### Technical Data

Ambient Temperature Range	-40°C ~ +65°C
Dimensions(WxHxD)	260mm*225mm*32mm
Weight	2.9kg
Enclosure Rating	IP 67
Cooling	Natural Convection - No Fans
Type of Isolation	High Frequency Transformers
Communication	WiFi
Energy Management	Solarman Online Platform

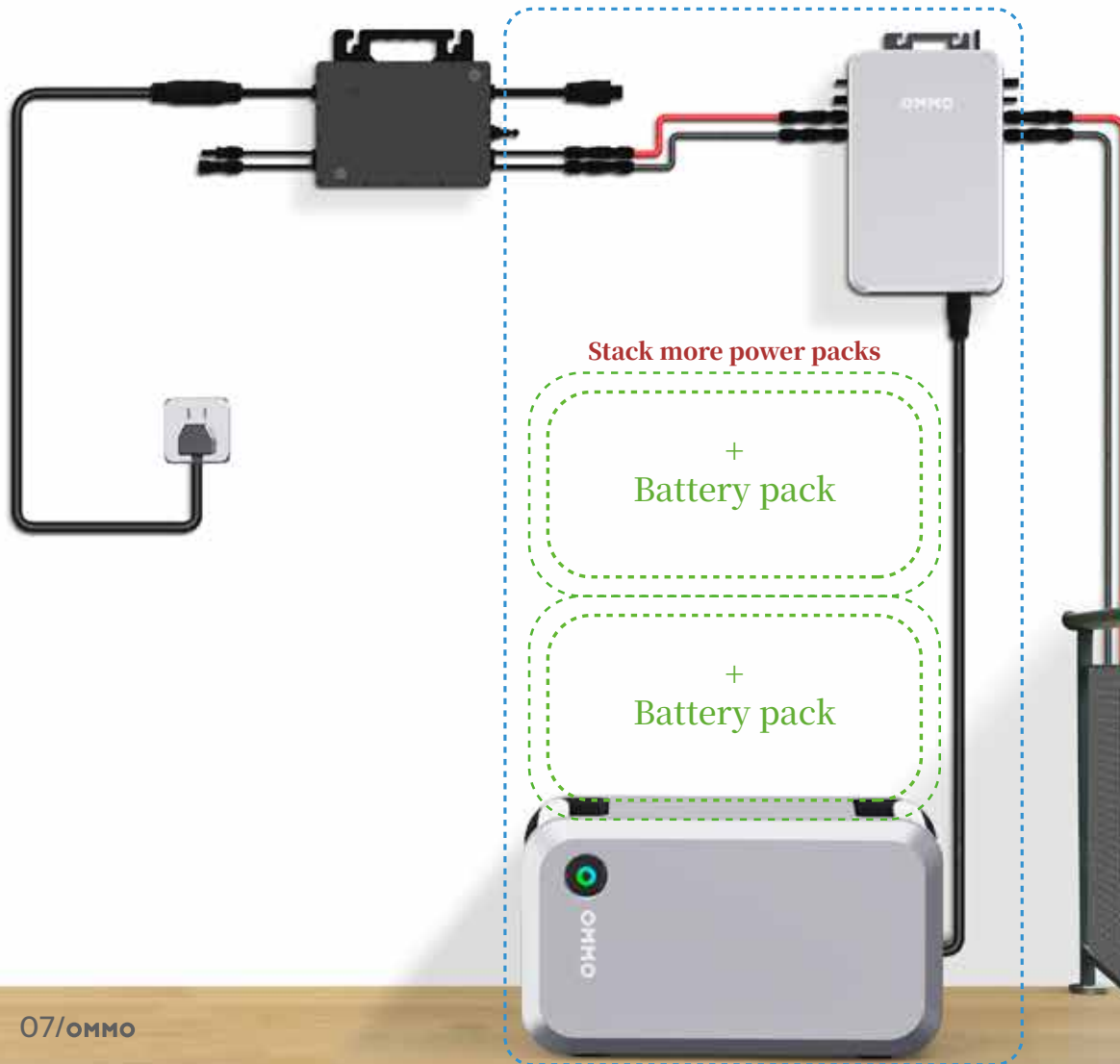




# Hot Selling Plug-And-Play Solar Set B

**SOLAR POWER FLOW IN OUR CONTROL!!**

**SAVE IT, AND RELEASE IT!!**



# Specification

## NO 3. 800W Plug-And-Play Solar Kit With 2 Kwh Storage Battery Set

ON SALE

### 200W Fliexible Solar Panels

#### STC

Spec/Model	SPP200QH70S
Max-Power(Pm)	200W
Power Tolerance	0~+5W
Max-Power Voltage(Vm)	19.8V
Max-Power Current(I <sub>m</sub> )	10.11A
Open-Circuit Voltage(Voc)	23.9V
Short-Circuit Current(Isc)	10.65A
Effective Module Efficiency(η <sub>m</sub> )	20.40%
STC: AM=1.5, Irradiation 1000W/m <sup>2</sup> , Module Temperature 25°C	

#### Mechanical Characteristics

Installation Module Dimension (LxWxH)	1270mmx900mmx2.5mm
Weight	3.4 kg
Back material	Back Sheet(black)
Cell	70(5x14)/Mono /166*83mm /φ223mm
Frame	
Junction box(protection degree)	IP68
Cable (length/cross-section area)	Customizable/ 4mm2
Connector	MC4 Compatible



### Storage Battery Set

#### PV HUB

Cell model	OM-1600-PV-HUB	Output Power	800Wx2 Max
Colour	Silver	Battery voltage range	40V-58.4V
Dimension	375x220x60mm	EMC Grade	CLASS-B
Net weight	≈3.2kg	Peak efficiency	98%
PV input voltage range	12V-60V	MPPT tracking efficiency	99%
Battery charging power	1600W Max	Battery short circuit protection current	66A
PV input power	800Wx2 Max	Working temperature	0°C-40°C
Output voltage range	18V-55V	RS485、CAN communication support	
		WiFi communication support	



#### 2 kWh Storage Battery



Cell model	EVE-C40	Minimum capacity	≥39Ah
Watt hour	2048Wh	Rated voltage	51.2V
Colour	Silver	Battery internal resistance	IR≤30mΩ
Net weight	20.85kg	Charging voltage	58.4V
Gross weight	22.88kg	Charging cut-off current	0.8A
Dimension L*W*H	450*270*270mm	Standard charging	20A(0.5C)
Cell type	LiFePO4	Standard discharging	20A(0.5C)
Series and parallel mode	16S2P	Maximum continuous discharge current	≤55A
Rated capacity	40Ah	Battery operating voltage	40V-58V

### 800W Micro Inverter

Model	TM-L800M	Nominal Output Voltage	230V
Recommended PV Module Power	280W-550W	Extended Output Voltage Range	184V-253V
Start-up Voltage	20V	Max. Output Current	3A / 4A
MPPT Voltage Range	25-55V	Nominal Output Current	3.47A
Max. Input Voltage	60V	Nominal Frequency/Range	50Hz/45 - 55
Max. Input Current	13.5A*2	Power Factor	>0.99 default
Max. DC Short Circuit Current	16.5A*2	Total Harmonic Distortion (THD)	<3%
Number of MPPTs	2	Max. Units Per Branch	7 / 5
Rated Output power	800W		

